
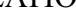


PROPRIETARY INFORMATION:		REVISION			
PROPRIETARY OF GLOBTEK, INC. ANY REPRODUCTION, DISCLOSURE OR USE OF THIS DRAWING, IN WHOLE OR IN PART, IS HEREBY PROHIBITED EXCEPT AS SPECIFIED IN WRITING BY GLOBTEK, INC.		REV	DESCRIPTION	DATE	APPROVED
		A	INITIAL RELEASE, RFS. 21855, MS	10/20/11	HM
		B	UPDATE PACKING, RFS. 21952, MS	11/30/11	HM
		C	ADD CUSTOMER LOGO TO MAIN LABEL, RFS. 22222, MS	01/13/12	HM
		D	UPDATE CONNECTOR OVERMOLD DRAWING, RFS. 22398, MS	02/13/12	HM
 DESIGN TO MEET EN60335					
1. ELECTRICAL SPECIFICATION:					
INPUT					
INPUT VOLTAGE:		90Vac TO 264Vac			
INPUT CURRENT:		<0.5Arms AT 90Vac INPUT			
INPUT FREQUENCY:		47HZ - 63HZ			
OUTPUT					
OUTPUT VOLTAGE:		12VDC, NO LOAD TO FULL LOAD, NO MINIMUM LOAD REQUIRED			
OUTPUT CURRENT:		1.25 A			
RATED OUTPUT POWER:		15WATTS, MAXIMUM			
OUTPUT REGULATION:		+/- 5% MEASURED AT THE OUTPUT CONNECTOR			
LINE VOLTAGE REGULATION:		+/- 1% TYPICAL MEASURED AT FULL LOAD			
HIGH FREQ. OUTPUT RIPPLE:		1% OF OUTPUT VOLTAGE, PEAK TO PEAK, TYPICAL			
TURN-ON/TURN-OFF OVERSHOOT:		5% MAXIMUM, 1mS TYPICAL RECOVERY TIME FOR 25% STEP LOAD			
TURN-ON DELAY:		1 SECOND, TYPICAL			
HOLD-UP TIME:		8mS TYPICAL AT NOMINAL INPUT VOLTAGE AND FULL LOAD			
INRUSH CURRENT:		30A TYPICAL AT 115Vac INPUT AND 60A TYPICAL AT 230Vac INPUT			
SWITCHING FREQUENCY:		65KHz TYPICAL, VARIES WITH LINE AND LOAD			
EFFICIENCY:		DESIGN TO MEET TO SECTION 301 OF ENERGY INDEPENDENCE AND SECURIT ACT (EISA), CECP TIER 2 (CHINA), MEPS TIER 2 (AUSTRALIA), CODE OF CONDUCT (EUROPE)			
PROTECTION					
OVER-VOLTAGE:		PROTECTED WITH ZENER CLAMP ACROSS OUTPUT			
OVERLOAD/SHORT CIRCUIT:		PROTECTED, UNIT WILL RECOVER UPON REMOVAL OF FAULT			
INPUT PROTECTION:		INPUT LINE FUSING			
SAFETY					
DIELECTRIC WITHSTAND VOLTAGE:					
FOR CLASS II WITH FUNCTIONAL EARTH VERSIONS:		4242Vdc FROM PRIMARY TO SECONDARY			
EARTH LEAKAGE CURRENT:		< 3.5mA at 264Vac INPUT VOLTAGE			
APPROVALS					
ITE UNITS:		CE FOR EMC, PSE TO J60950, PSE TO J60950, GOST-R			
EMI:		TESTED TO COMPY WITH EN55022 CLASS B AND FCC PART 15 CLASS B, VCCI WHEN TESTED WITH RESITIVE LOAD, BOTH CONDUCTED AND RADIATED EMI			
CE MARK:		TESTED TO COMPLY WITH EN55022:1998 A1:2000, EN610003-2, E610003-3 INCLUDING EN61204-3:2000, EN61000-4-2, EN61000-4-3, EN61000-4-4, EN61000-4-5, EN61000-4-6N EN61000-4-11			
OTHERS					
MTBF:		200,000 HOURS AT 25°C AMBIENT TEMPERATURE			
OPERATING TEMPERATURE:		0°C TO 40°C AMBIENT TEMPERATURE			
HUMIDITY:		0% TO 90% RELATIVE HUMIDITY			
STORAGE TEMPERATURE:		-10°C TO 80°C			
ROHS:		COMPLIES WITH EU 2002/95/EC AND CHINA SJ/T 11363-2006			



Foot Note: Globtek Inc. will not be liable for the safety and performance of these power supplies if unauthorized access and repair occurs. End user should consult applicable UL, CSA or EN standards for proper installation instructions.	DASH NO.	PART NO	REV.	DESCRIPTION		NOTES	
	TABULATION BLOCK						
			TOLERANCES: DECIMALS ANGULAR .xx +/- 0.1 +/- 1° .xxx +/- .005		 GlobTek, Inc. www.globtek.com 186 Veterans Dr. Northvale, NJ 07647 Tel. 201-784-1000 Fax 201.784.0111		
			MILLIMETERS ANGULAR .xx +/- 0.3 +/- 1° .xxx +/- .013				
	Limitation of Use: Globtek product are not authorized for use as mission critical components in life support, hazardous environment, nuclear or aircraft applications without prior written approval from the CEO of Globtek Inc.	INIT.BY: MS	DATE: 10/20/11	DWG TITLE:		SWITCHER, 15WATT, 12VDC @ 1.25A, SINGLE OUTPUT, EUROPEAN WALL PLUG-IN UNIVERSAL INPUT, ITE, CLASS II FE	
Contents of this document are subject to change without prior notice	DRAWN: NF	DATE: 10/20/11	FSCN No.: G, Y	SIZE A	MODEL NO:	GT-41080-1812-W3E	REV. D
	APRVD : HM	DATE: 10/20/11	CAGE CODE: 0GV V90		PART NO:	WR94E1250KCCCRG2528	SHEET 1 OF 5
			SCALE: NONE				

PROPRIETARY INFORMATION:

PROPRIETARY OF GLOBTEK, INC. ANY REPRODUCTION, DISCLOSURE OR USE OF THIS DRAWING, IN WHOLE OR IN PART, IS HEREBY PROHIBITED EXCEPT AS SPECIFIED IN WRITING BY GLOBTEK, INC.

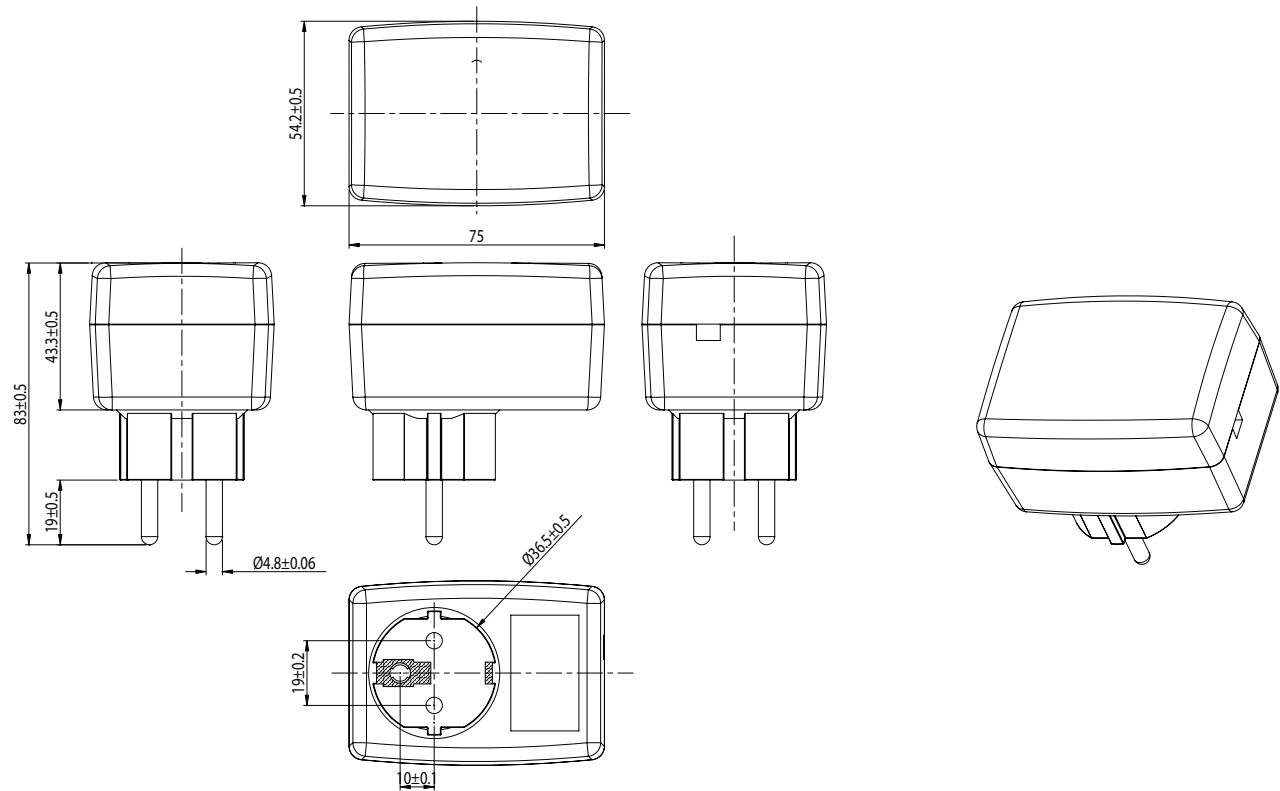
2. ENCLOSURE / INPUT CONNECTOR CONFIGURATION:

DIMENSIONS ARE IN MM UNLESS SPECIFIED OTHERWISE

UPPER HOUSING: HIGH IMPACT PLASTIC, 94V0 POLYCARBONATE, NON-VENTED, COLOR BLACK

LOWER HOUSING: HIGH IMPACT PLASTIC 94V0 POLYCARBONATE, NON- VENTED, COLOR BLACK

SIZE: 74 x 49 x 40.5 \pm 0.5 mm



INPUT :

CONFIGURATION: EURO (SCHUKO) PLUG 7/4, 2 PRONG WITH GROUND

GlobTek, Inc.
www.globtek.com

186 Veterans Dr. Northvale, NJ 07647
Tel. 201-784-1000 Fax 201.784.0111

DWG TITLE: SWITCHER, 15WATT, 12VDC @ 1.25A, SINGLE OUTPUT,
EUROPEAN WALL PLUG-IN UNIVERSAL INPUT, ITE, CLASS II FE

MODEL NO: GT-41080-1812-W3E

REV.
D

PART NO: WR94E1250KCCCRG2528

SHEET 2 OF 5

PROPRIETARY INFORMATION:

PROPRIETARY OF GLOBTEK, INC. ANY REPRODUCTION, DISCLOSURE OR USE OF THIS DRAWING, IN WHOLE OR IN PART, IS HEREBY PROHIBITED EXCEPT AS SPECIFIED IN WRITING BY GLOBTEK, INC.

3. OUTPUT CORD:

1 CONDUCTOR+SHIELD, 20 AWG, ROUND UL 1185, GLOBTEK P/N: 431-07780120(R)/OSP-43107780120(R)

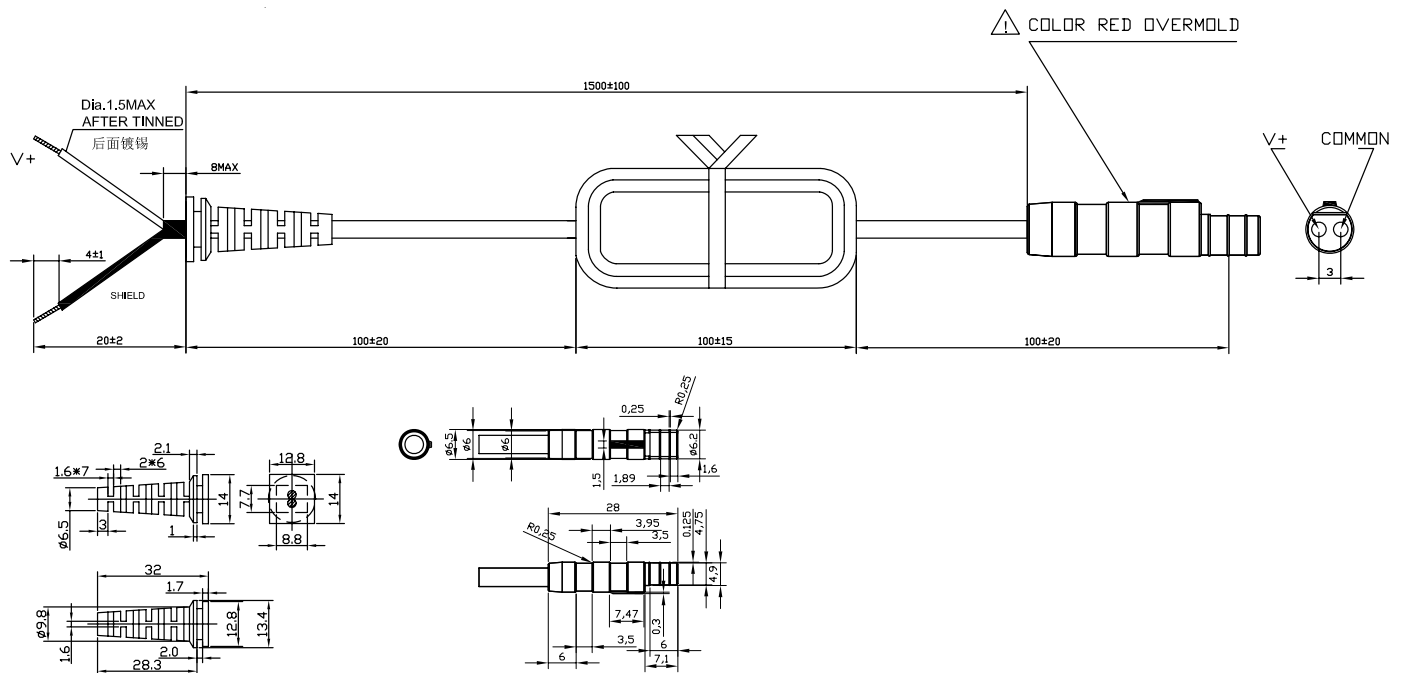
COLOR BLACK, LENGTH (L) OF CORD: 1500 ± 100 mm.

CORD IS MEASURED FROM THE HOUSING TO THE END TO THE OVERMOLD OF THE CONNECTOR.

CABLE IS TO BE MARKED WITH WIRE GAUGE, AND ALL APPLICABLE RATING AND SAFETY APPROVALS.

4. OUTPUT CONNECTOR:

2 PIN FEMALE CONNECTOR, TERMINAL CONTACT: AMP P/N:166291-1 FOR 20-24 AWG WIRE



GlobTek, Inc.
www.globtek.com

186 Veterans Dr. Northvale, NJ 07647
Tel. 201-784-1000 Fax 201.784.0111

DWG TITLE: SWITCHER, 15WATT, 12VDC @ 1.25A, SINGLE OUTPUT,
EUROPEAN WALL PLUG-IN UNIVERSAL INPUT, ITE, CLASS II FE

MODEL NO: GT-41080-1812-W3E

REV.
D

PART NO: WR94E1250KCCCRG2528

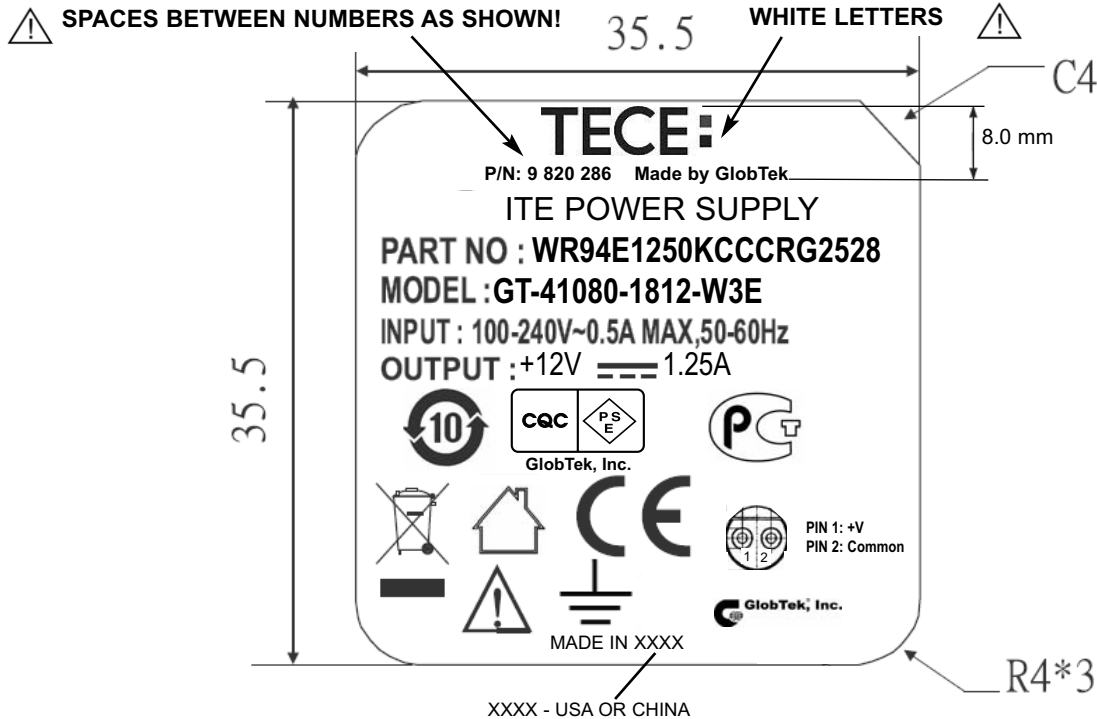
SHEET 3 OF 5

PROPRIETARY INFORMATION:

PROPRIETARY OF GLOBTEK, INC. ANY REPRODUCTION, DISCLOSURE OR USE OF THIS DRAWING, IN WHOLE OR IN PART, IS HEREBY PROHIBITED EXCEPT AS SPECIFIED IN WRITING BY GLOBTEK, INC.

5. LABEL:

MATERIAL: .007 (0.18) THICK FLAT THERMAL TRANSFER, IMPRINTABLE, BLACK POLYESTER SHEET WITH WHITE NOMENCLATURE.
MANUFACTURER: STEVEN LABEL, MATERIAL I.D. NO.3302-33, UL FILE NO. MH12821(N), UL MATERIAL DESIGNATION FILE NO. GHW332RL. OPTIONAL LABEL MATERIAL CAN BE SUBSTITUTED PROVIDING MATERIAL IS UL LISTED AND COMPLIES WITH APPLICABLE SAFETY REQUIREMENTS.



ACTUAL POSITIONING OF SYMBOLS AND TEXT IS SUBJECT TO CHANGE AT TIME OF MANUFACTURE



→ **CAUTION: FOR INDOOR USE ONLY**
ATTENTION: POUR UTILISATION A L'INTERIEUR SEULEMENT

SECOND LABEL: S/N: ROHS UNDERNEATH OF MAIN LABEL

GlobTek, Inc.
www.globtek.com

186 Veterans Dr. Northvale, NJ 07647
Tel. 201-784-1000 Fax 201.784.0111

DWG TITLE: SWITCHER, 15WATT, 12VDC @ 1.25A, SINGLE OUTPUT,
EUROPEAN WALL PLUG-IN UNIVERSAL INPUT, ITE, CLASS II FE

MODEL NO: GT-41080-1812-W3E

REV.
D

PART NO: **WR94E1250KCCCRG2528**

SHEET 4 OF 5

PROPRIETARY INFORMATION:

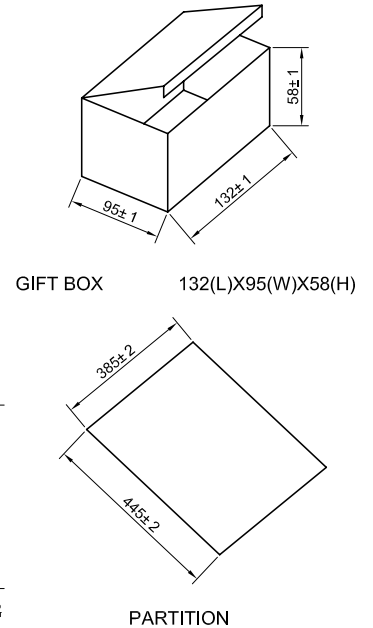
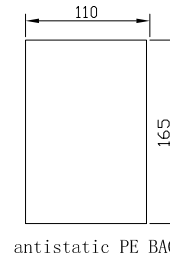
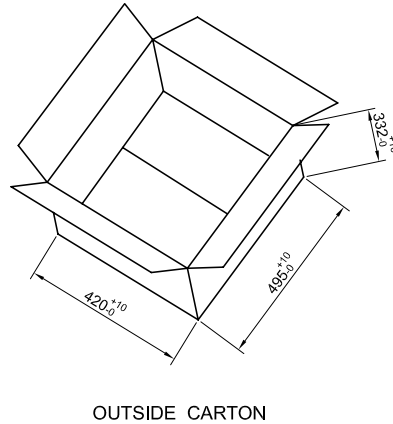
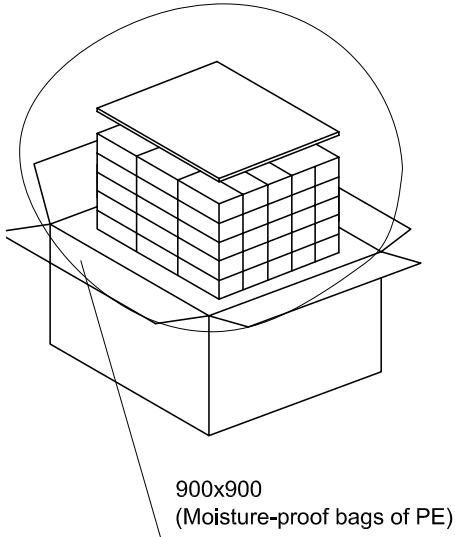
PROPRIETARY OF GLOBTEK, INC. ANY REPRODUCTION, DISCLOSURE OR USE OF THIS DRAWING, IN WHOLE OR IN PART, IS HEREBY PROHIBITED EXCEPT AS SPECIFIED IN WRITING BY GLOBTEK, INC.

6. INDIVIDUAL PACKING BOX:

MATERIAL: CORRUGATED FIBERBOARD, F-FLUTE 0.8 (2.0) THICK, DOUBLE WALL CONSTRUCTION.

EXTERNAL FINISH: WHITE, COATED WITH GLOSS FINISH (AQUEOUS OR VARNISH) STYLE: TUCK SIDES WITH LOCKING TABS ON BOTH SIDES OF BOX. NO PRINTING ON THE OUTSIDE OF BOX.

75 PCS/CARTON

**China RoHS SELF DISCLOSURE TABLE**

有毒有害物质或元素名称及含量标准形式 Name and concentration of hazardous substance or element in product						
零件名 Name of part	剧毒有害物质或元素 Hazardous substance or element					
	铅 Pb	汞 Hg	镉 Cd	六价铬 Cr(VI)	多溴联苯 PBB	多溴二苯醚 PBDE
输出线材料 DC CABLE	X	O	O	O	O	O
输入插座 AC SOCKET	X	O	O	O	O	O
二极管 SMD ZENER	X	O	O	O	O	O
O: 表示该有毒有害物质在这部件中所有同质材料中的含量均在SJ/T 11363-2006规定的限量要求以下。 O: refers to the concentration of this hazard substance in the all homogenous materials in this part is below the concentration limit as stipulated in the standard SJ/T 11363-2006.						
X: 表示该有毒有害物质至少在这部件中的某一同质材料中的含量超出 SJ/T 11363-2006规定的限量要求。 X: refers to the concentration of this hazard substance at least in a homogenous material is higher than the concentration limit as stipulated in the standard SJ/T 11363-2006.						

GlobTek, Inc.
www.globtek.com

186 Veterans Dr. Northvale, NJ 07647
Tel. 201-784-1000 Fax 201.784.0111

DWG TITLE: SWITCHER, 15WATT, 12VDC @ 1.25A, SINGLE OUTPUT,
EUROPEAN WALL PLUG-IN UNIVERSAL INPUT, ITE, CLASS II FE

MODEL NO: GT-41080-1812-W3E

REV.
D

PART NO: WR94E1250KCCCRG2528

SHEET 5 OF 5